

I. Bahelka¹, O. Bučko², E. Hanusová¹

¹NAFC – RIAP Nitra, Slovakia

²Slovak Agricultural University, Nitra, Slovakia

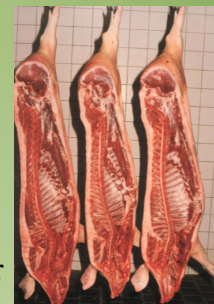
EFFECT OF DIET SUPPLEMENTATION WITH TANNINS ON GROWTH INTENSITY, CARCASS VALUE AND BOAR TAIN LEVEL IN ENTIRE MALE PIGS

Boar taint determination is crucial for pork production with uncastrated male pigs. Recently, published data show that boar taint can be reduced by some feed additives. One of the most promising additives seem to be hydrolysable tannins – natural plant ingredients originating from some trees (e.g. chestnut, oak, fir, etc.).

AIM: to evaluate growth intensity, carcass value, androstenone and skatole level in entire males after supplementation of the diet with hydrolysable tannins

Material and Methods:

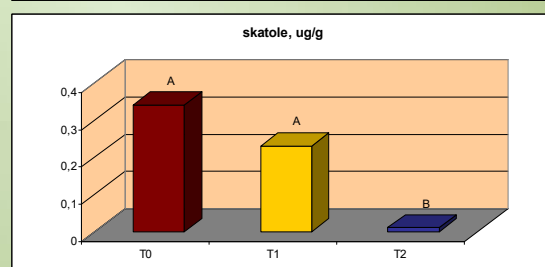
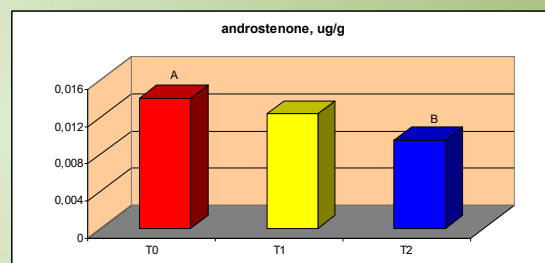
- 30 pigs, progeny of Lx(YOxPN) from 6 litters, housed by pairs in control station
- commercial diet (12.8 MJ ME, 17.2 % CP)
- test from 30 kg to cca 120 kg live weight
- supplementation with 0, 1 or 2 % (of kg feed) tannins (Farmatan®, Slovenia) from 80 kg to slaughter (cca 120 kg live weight) – groups T0, T1, T2
- a day after slaughter, carcass dissection and sampling of backfat over LD muscle (100 g) for androstenone and skatole analyses



Fattening and carcass traits

Trait	T0	T1	T2
Daily gain in test, g	886.0	872.0	858.0
Slaughter weight, kg	121.30	122.80	122.10
Carcass half, kg	53.46	54.78	55.69
Backfat thickness, mm	21.67 ^A	22.80 ^a	25.73 ^{Bb}
Shoulder, kg	5.26	5.35	5.47
Neck, kg	3.84	3.92	4.17
Loin, kg	5.11	5.26	5.26
Thigh, kg	9.62	9.44	9.54
Belly, kg	8.69	9.13	9.10
Lean meat, %	58.79 ^a	58.94 ^a	56.82 ^b

a, b P<0.05 A,B P<0.01



A,B P<0.01

Conclusion:

- no effect of tannins on growth intensity
- no effect of 1 % concentration on carcass value and boar taint compounds
- 2 % tannins – negative impact on carcass value but highly positive on androstenone and skatole levels

Contact: NPPC – RIAP Nitra, Hlohovecká 2, 951 41 Lužianky, Slovakia,
e-mail: bahelka@vuzv.sk

**Thank you for
your attention**

*The authors acknowledge support from the
COST action CA12215 IPEMA*